

REVISIONS					
P	LTN	DESCRIPTION	DATE	OWN	APVD
A5		REVISED PER PCN-23-193051	20NOV2023	AJ	CB
B		REVISED PER PCN-23-192205	05FEB2024	RK	CB
B1		REVISED PER PCN-24-210159	21MAY2024	PS	CB
B2		REVISED PER PCN-25-254987	08SEP2025	AP	AJ

FIGURE 1

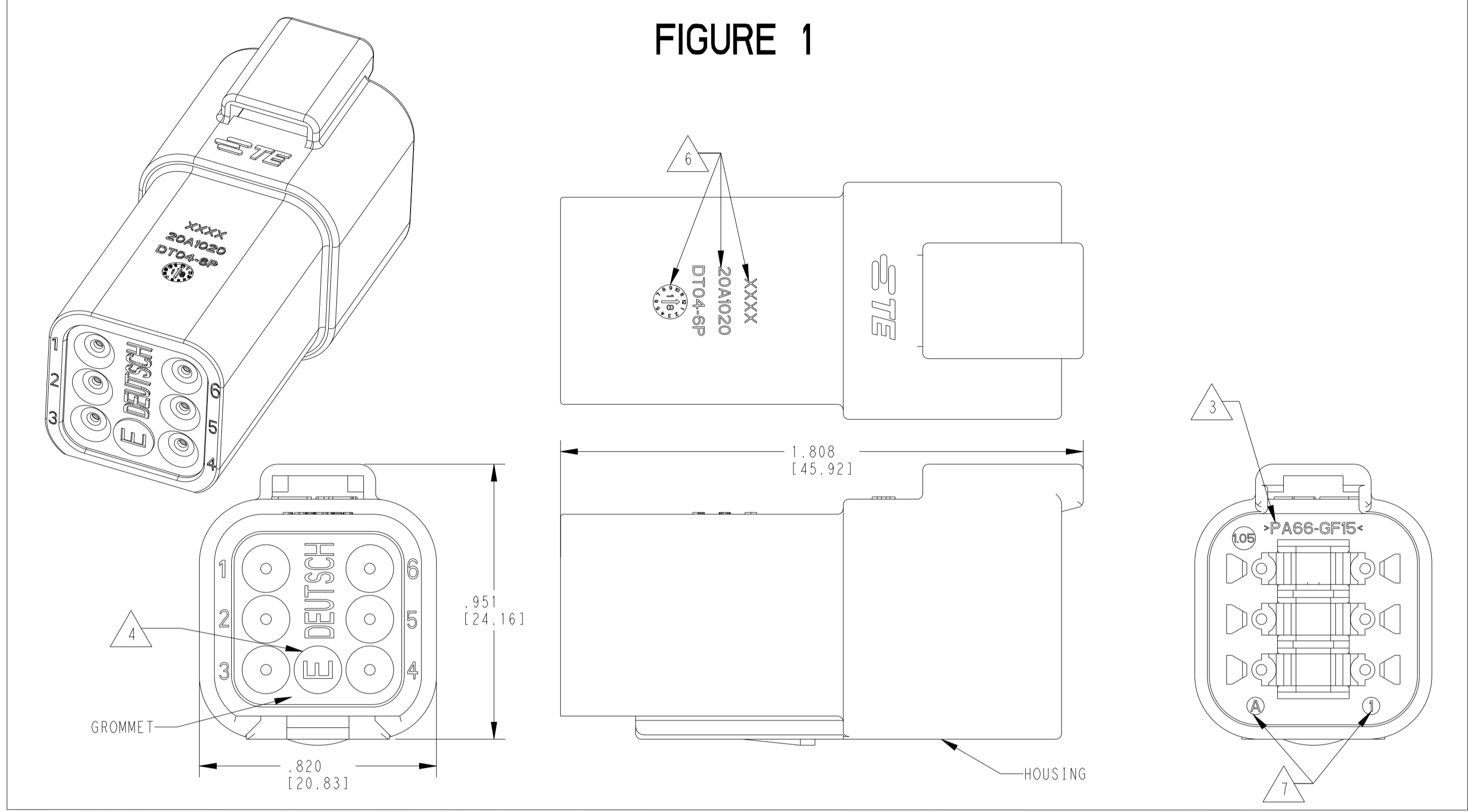
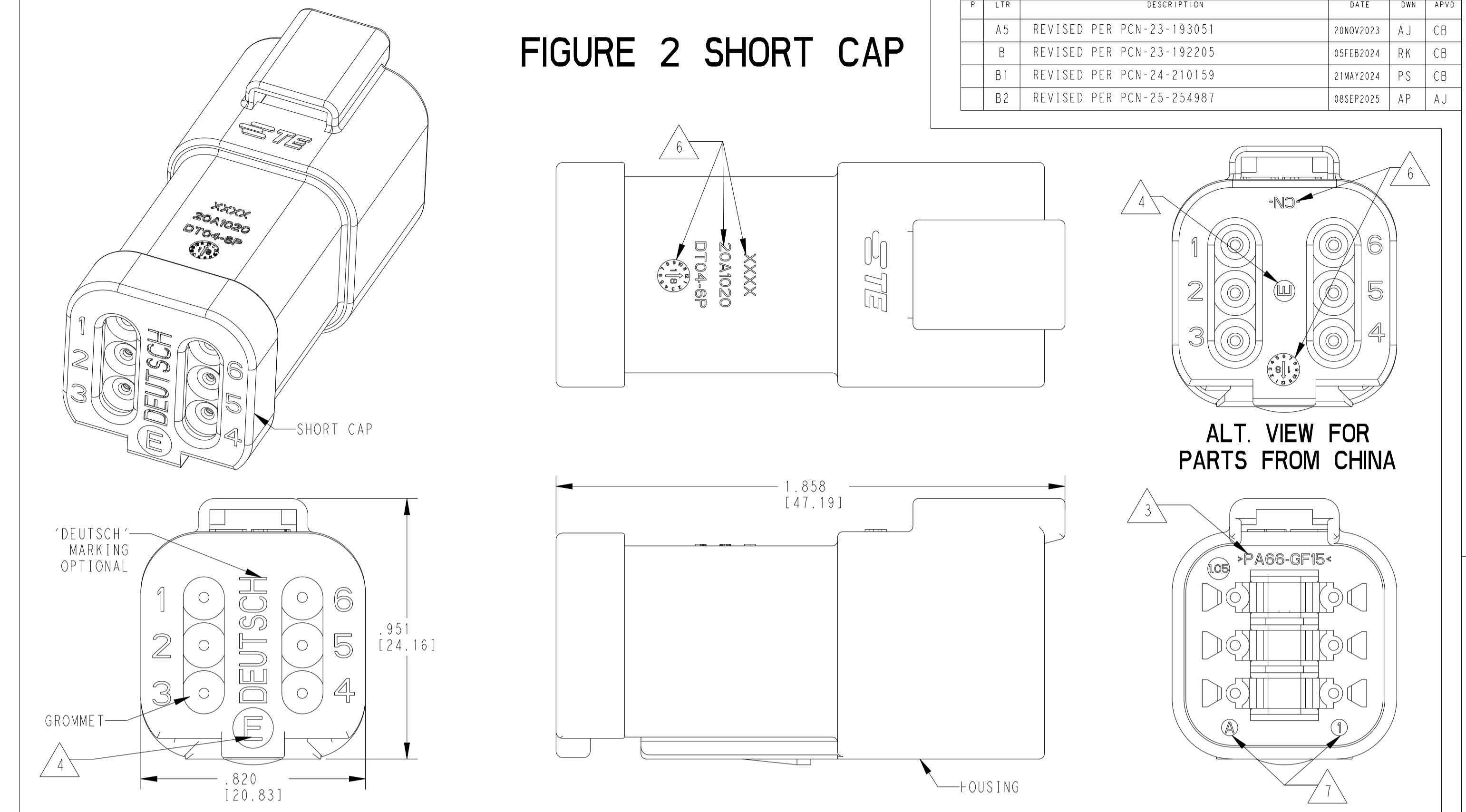
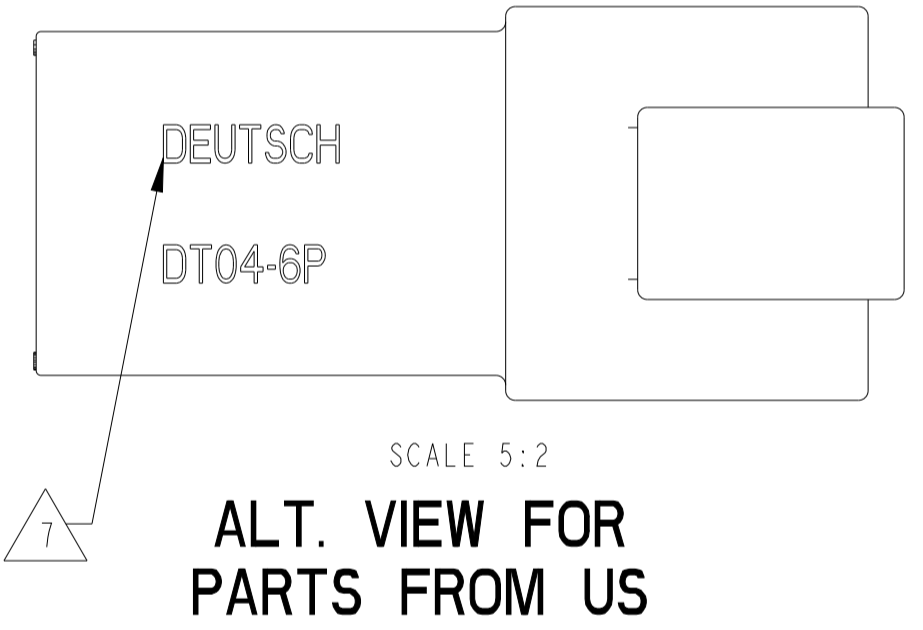
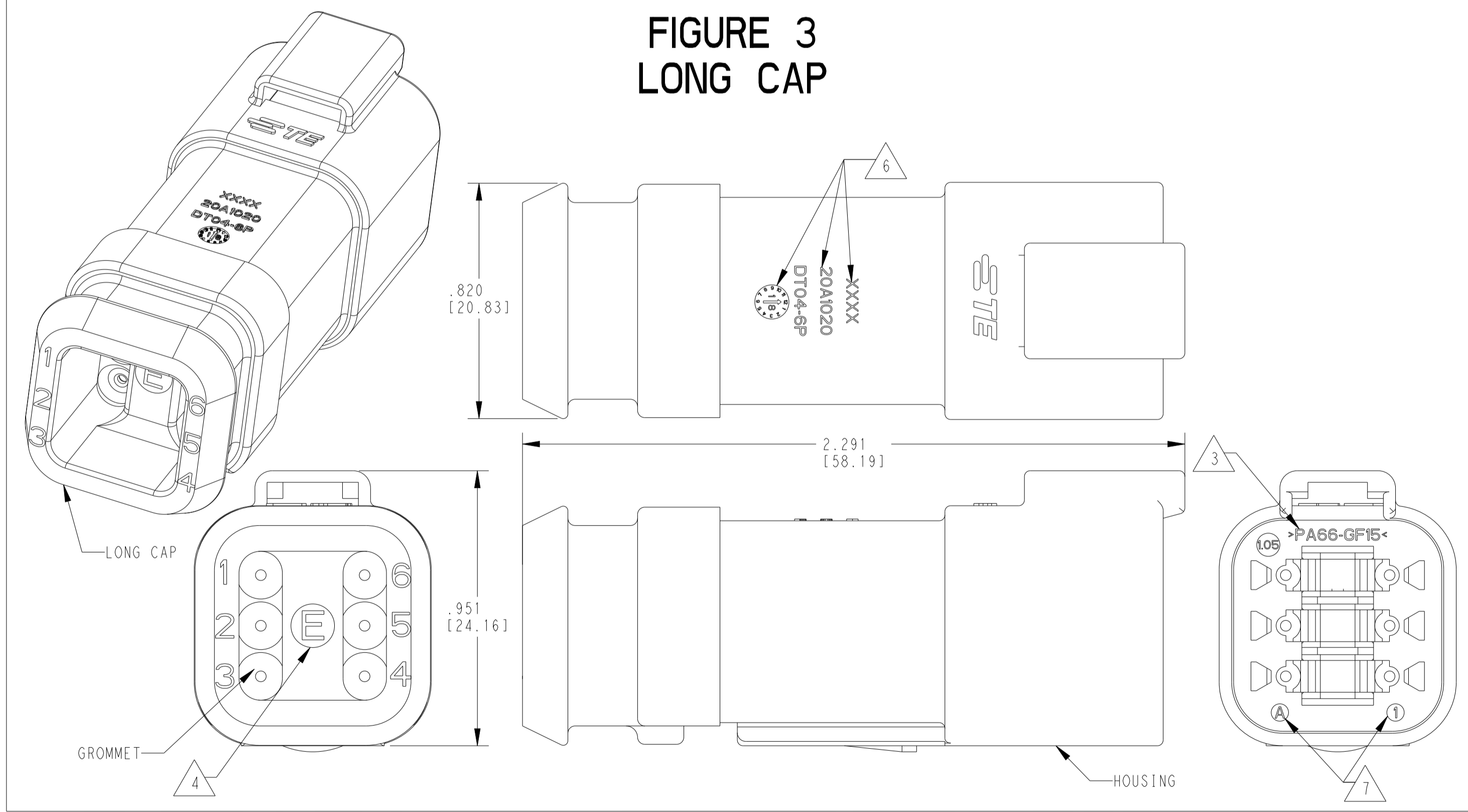


FIGURE 2 SHORT CAP



CONTACT SIZE	WIRE RANGE	INSULATION OD SEALING RANGE	SEAL IDENTIFICATION
16	14-20 AWG [2.5-0.5mm ²]	.088- .145 [2.23-3.68] .053- .120 [1.35-3.05]	STANDARD SEAL EXTRA THIN SEAL E-SEAL

FIGURE 3 LONG CAP



TE INTERNAL PART NUMBER	DEUTSCH PART NUMBER	PN REV	HOUSING COLOR	STANDARD SEAL	EXTRA THIN SEAL	E-SEAL	BLOCKED SEAL	SHORT CAP	LONG CAP	FIGURE
DT04-6P	DT04-6P	A	GRAY	X						1
DT04-6P-C015	DT04-6P-C015	B	GRAY		X			X		1
DT04-6P-C017	DT04-6P-C017	B	GRAY			X	X	X		2
DT04-6P-CE01	DT04-6P-CE01	C	GRAY		X			X		2
DT04-6P-CE02	DT04-6P-CE02	B	BLACK		X			X		1
DT04-6P-CE03	DT04-6P-CE03	B	BLACK		X			X		2
DT04-6P-CE04	DT04-6P-CE04	B	GRAY		X				X	3
DT04-6P-CE09	DT04-6P-CE09	B	BLACK		X				X	3
DT04-6P-CE26	DT04-6P-CE26	A	BLACK			X	X	X		2
DT04-6P-E003	DT04-6P-E003	B	GRAY	X				X		2
DT04-6P-E004	DT04-6P-E004	A	BLACK	X						1
DT04-6P-E005	DT04-6P-E005	A	BLACK	X				X		2
DT04-6P-E008	DT04-6P-E008	B	GRAY	X					X	3
DT04-6P-EE01	DT04-6P-EE01	A	BLACK	X					X	3
DT04-6P-EP04	DT04-6P-EP04	C	GRAY	X				X		2
DT04-6P-P004	DT04-6P-P004	B	GRAY	X						1
1-2448114-1	DT04-6P-TE09	A	BROWN		X					1
1-2448114-2	DT04-6P-TE03	A	GREEN		X					1
1-2448114-3	DT04-6P-TE07	A	BLUE		X					1
2-2448114-1	DT04-6P-TN09	A	BROWN	X						1
2-2448114-2	DT04-6P-TN03	A	GREEN	X						1
2-2448114-3	DT04-6P-TN07	A	BLUE	X						1
3-2448114-1	DT04-6P-EE18	A	BROWN		X			X		2
3-2448114-2	DT04-6P-EE16	A	GREEN		X			X		2
3-2448114-3	DT04-6P-EE17	A	BLUE		X			X		2
4-2448114-1	DT04-6P-EE14	A	BROWN	X				X		2
4-2448114-2	DT04-6P-EE13	A	GREEN	X				X		2
4-2448114-3	DT04-6P-EE06	A	BLUE	X				X		2

- 4 "E" IDENTIFIES E-SEAL, LOCATED APPROX. AS SHOWN.
 - 3 MATERIAL: HOUSING: PA66 GF15, SEE TABLE FOR COLOR
SHORT, LONG CAP: PA66 GF15, BLACK
GROMMET: E-SEAL VMO (BURNT RED)
N-SEAL VMO (RED-ORANGE)
BLOCKED VMO (RED-ORANGE)
 - 2 THIS RECEPTACLE MATES WITH DT06-6S-XXXX PLUG (XXXX = ALL MODIFICATIONS)
 - 1 SECONDARY WEDGE LOCK SOLD SEPARATELY: W6P-XXXX. (XXXX = ALL MODIFICATIONS)
- NOTES: UNLESS OTHERWISE SPECIFIED

- 6 MARKING FOR PARTS PRODUCED IN CHINA:
-XXXX IDENTIFIES THE MODIFICATION NUMBER, IF APPLICABLE. EXAMPLE: "E003" FOR DT04-6P-E003, OR BLANK FOR DT04-6P
-DATE CODE: IDENTIFIES THE YEAR, MONTH, DAY AND HOUR OF ASSEMBLY.
YEAR: FIRST AND SECOND DIGIT. (17 = 2017)
MONTH: THIRD DIGIT, EXCLUDING 1. A = JAN, B = FEB, C = MARCH ... (K = OCTOBER)
DAY: FOURTH AND FIFTH DIGITS (14 = 14th DAY)
HOUR: SIXTH AND SEVENTH DIGITS (11 = 11AM)
- 5 FOR CONTACT AND WIRE PERFORMANCE AND APPLICATION CHARACTERISTICS SEE CUSTOMER DRAWING 0425-015-0000.
- 7 MARKING FOR PARTS PRODUCED IN US:
-DATE CODE:
YEAR TO BE LAST NUMERICAL DIGIT, EX: 1 = 2021
MONTH USES SEQUENTIAL ALPHA CHARACTERS, EX: A = JANUARY
-DEUTSCH
- 8 FOR ALL ID MARKINGS SURROUNDING THE PART, ORIENTATION IS SHOWN FOR REFERENCE ONLY AND DOES NOT AFFECT FUNCTIONALITY, PROVIDED THE MARKINGS ARE IN THE CORRECT POSITION. SIZE AND LOCATION ARE APPROXIMATE, AS SHOWN.

THIS DRAWING IS A CONTROLLED DOCUMENT.

TE Connectivity

6 WAY RECEPTACLE, STANDARD SEAL EXTRA THIN SEAL, SHORT AND LONG CAP, DT SERIES

4AFU8 DT04-6P-XXXX

SCALE 3:1 SHEET 1 OF 1 REV B2

REVISIONS				
#	DATE	DESCRIPTION	DATE	APPROV
-	-	SEE SHEET 1	-	-

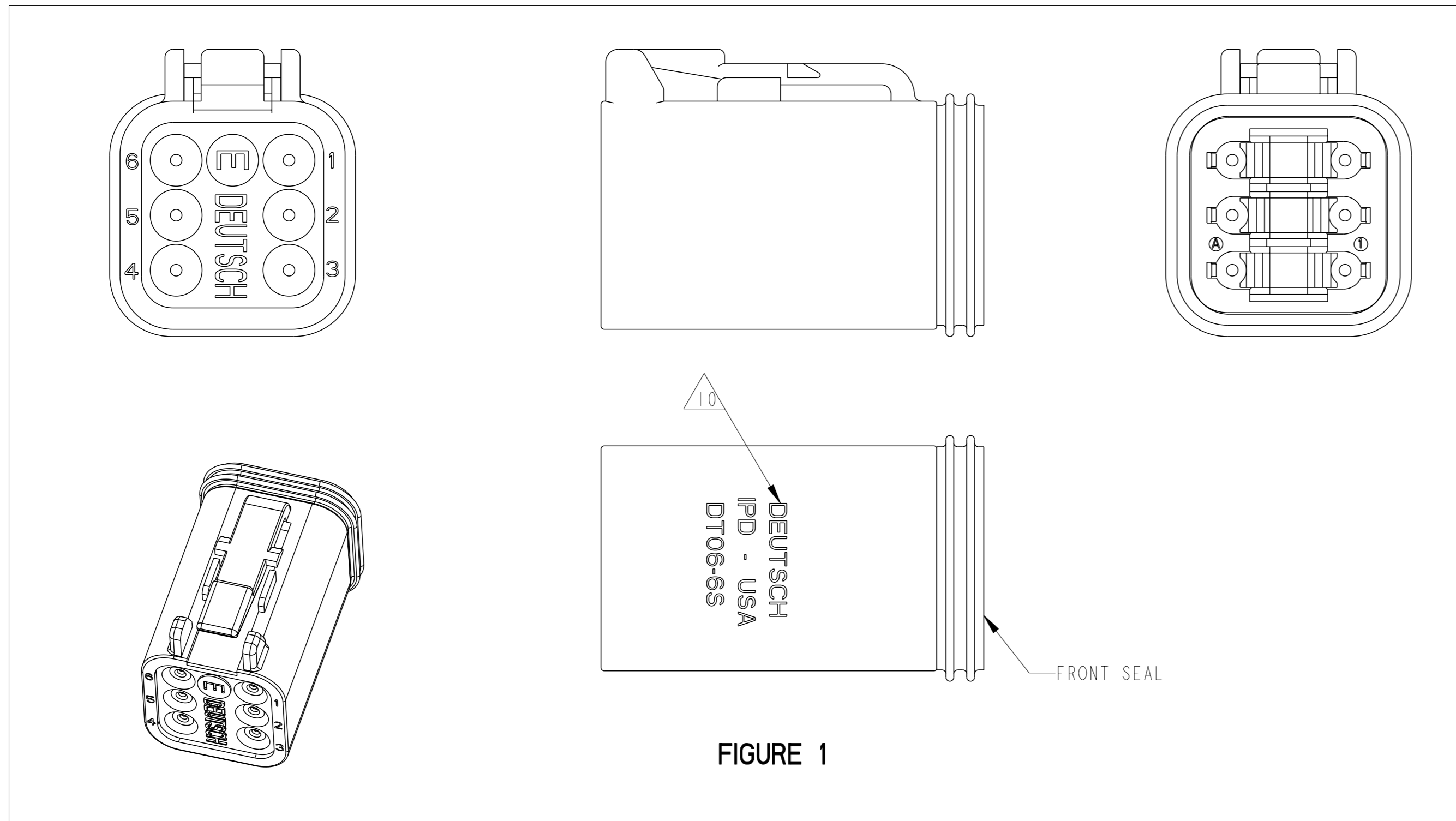


FIGURE 1

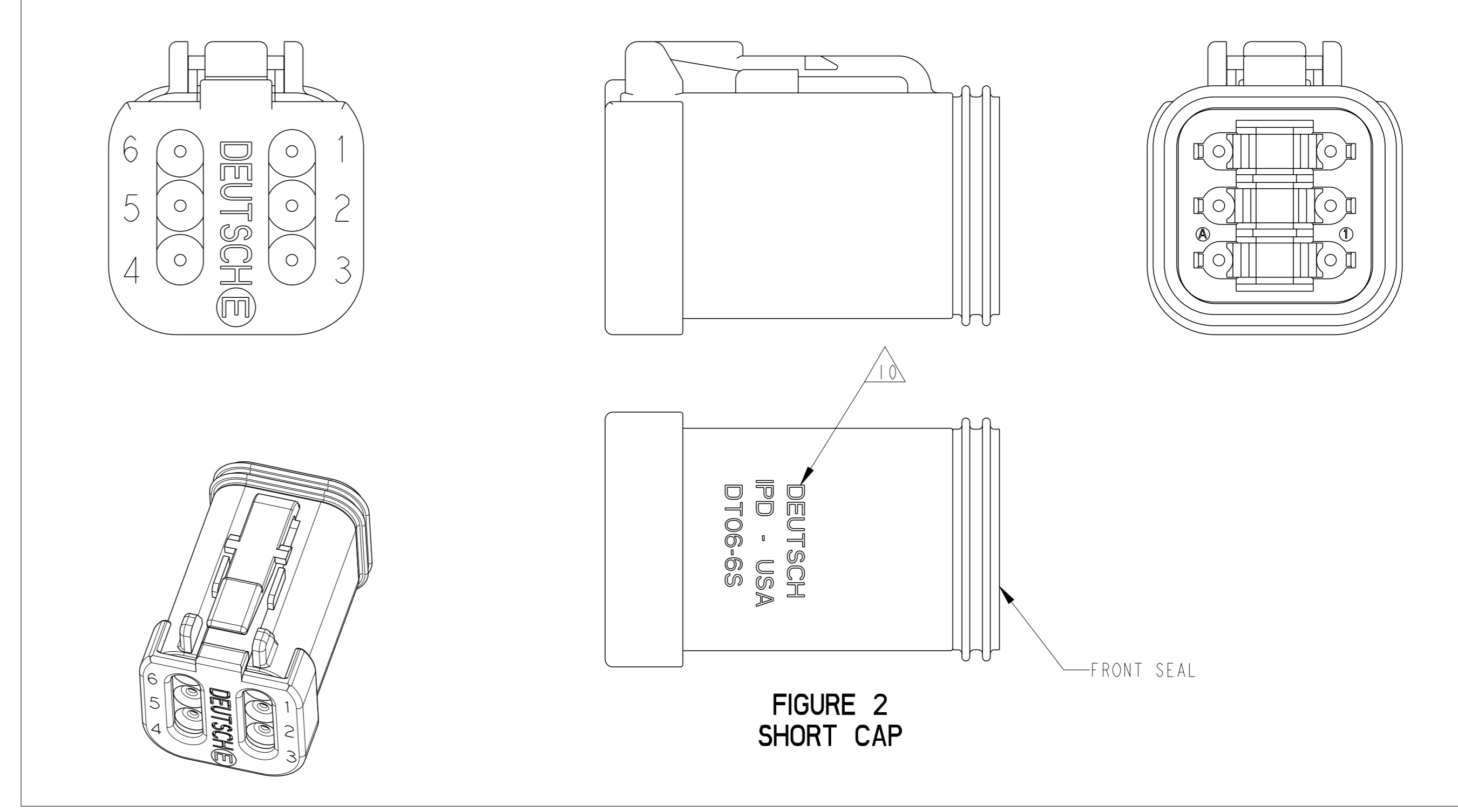


FIGURE 2
SHORT CAP

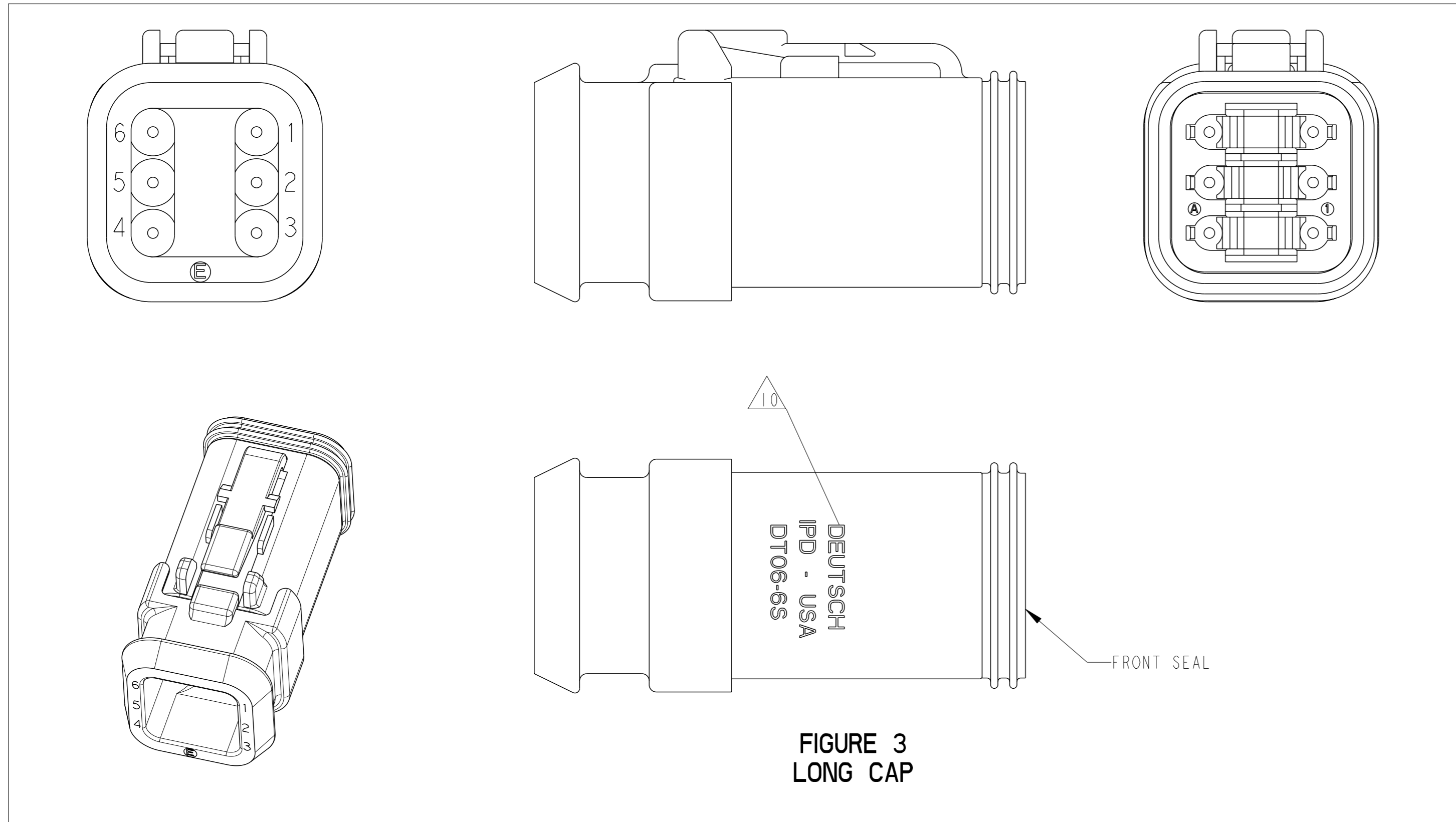


FIGURE 3
LONG CAP

13. FOR ALL ID MARKINGS SURROUNDING THE PART, ORIENTATION IS SHOWN FOR REFERENCE ONLY AND DOES NOT AFFECT FUNCTIONALITY, PROVIDED THE MARKINGS ARE IN THE CORRECT POSITION. SIZE AND LOCATION ARE APPROXIMATE, AS SHOWN.

12 CONNECTORS WITH A BLOCKED SEAL (AND DEUTSCH MARKINGS) INCLUDE THE W6S WEDGE (ORANGE) INSTALLED AS PART OF THE PLUG ASSEMBLY.

10 PARTS IN THE STANDARD TYPE CONFIGURATION WILL HAVE 'DEUTSCH' ID TEXT ON THE HOUSING.

9. SECONDARY WEDGE LOCK SOLD SEPARATELY: W6S OR W6SX (X = A,B,C,D KEY). W6S OR W6SX MUST BE USE WITH THE STANDARD TYPE PLUGS.

8 THE AFFECTED PARTS NUMBERS LISTED ARE CHANGING FROM STANDARD TYPE SEAL (SHEET 2) TO RETENTION TYPE SEAL (SHEET 1). PARTS WILL BE SUPPLIED FROM THE NORTH AMERICA REGION IN THE STANDARD TYPE CONFIGURATION UNTIL THE STANDARD TYPE TOOLING REACHES ITS END OF LIFE. PARTS PRODUCED IN CHINA WILL BE RETENTION TYPE ONLY.

AFFECTED PART NUMBERS	PN REV	COLOR	STANDARD SEAL GROMMET	EXTRA THIN SEAL E-SEAL GROMMET	BLOCKED SEAL	SHORT CAP	LONG CAP	FIGURE
DT06-6S	-	GRAY	X					1
DT06-6S-C015	A	GRAY		X				1
DT06-6S-C017	-	GRAY			X	X		2
DT06-6S-CE01	A	GRAY		X		X		2
DT06-6S-CE02	A	BLACK		X				1
DT06-6S-CE03	A	BLACK		X		X		2
DT06-6S-CE04	-	GRAY		X			X	3
DT06-6S-E003	-	GRAY	X			X		2
DT06-6S-E004	-	BLACK	X					1
DT06-6S-E005	-	BLACK	X			X		2
DT06-6S-E008	-	GRAY	X				X	3
DT06-6S-EP04	A	GRAY	X			X		2
DT06-6S-P004	A	GRAY	X					1

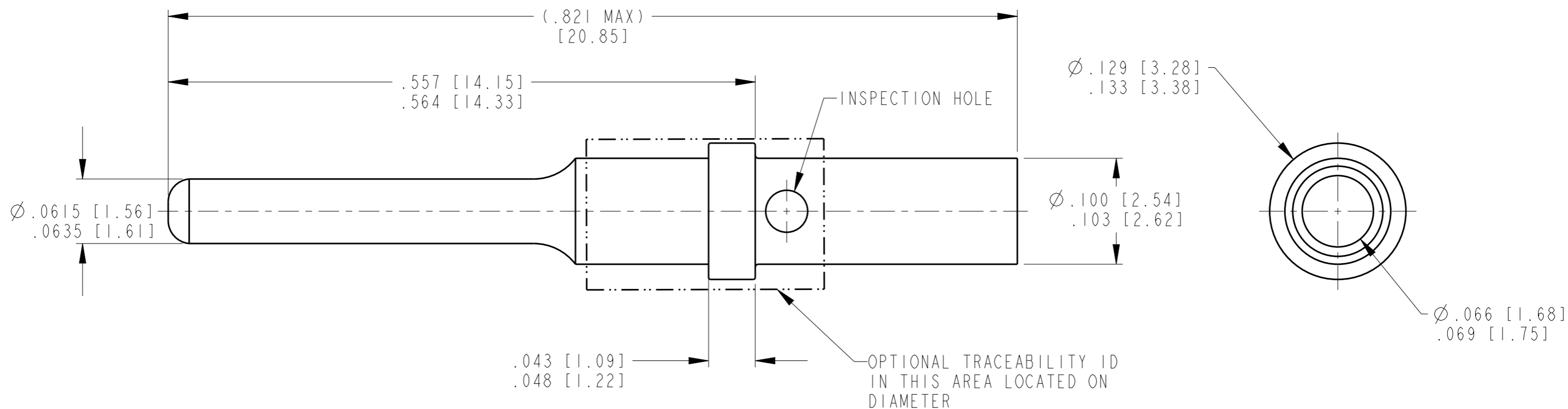
THIS DRAWING IS A CONTROLLED DOCUMENT.

OWN: R. MUKESH	21 JUL 2021	
CHK: R. MESSENGER	21 JUL 2021	
APVD: J. GRANTCHAROVA	25 JUL 2021	NAME: 6 WAY PLUG, STANDARD SEAL EXTRA THIN SEAL, SHORT AND LONG CAP DT SERIES SIZE: CAGE CODE DRAWING NO: 4AFU8 DRAWING NO: DT06-6S-XXXX
DIMENSIONS: IN [mm] TOLERANCES UNLESS OTHERWISE SPECIFIED: 0 PLC ± 1 PLC ± 2 PLC ± 3 PLC ±0.25 (0.641) 4 PLC ± ANGLES 40° 30' 0"		MATERIAL: FINISH: WEIGHT: CUSTOMER DRAWING

SCALE: 3:1 SHEET 2 OF 2 REV B4

REVISIONS

P	LTR	DESCRIPTION	DATE	DWN	APVD
	C	REVISED PER PCN E-18-001206	24JAN2018	JA	DM
	CI	REVISED PER PCN E-19-018080	19NOV2019	MK	DM



TE INTERNAL PN	DEUTSCH PN	PLATING
0460-202-1631	0460-202-1631	GOLD
0460-202-16141	0460-202-16141	NICKEL

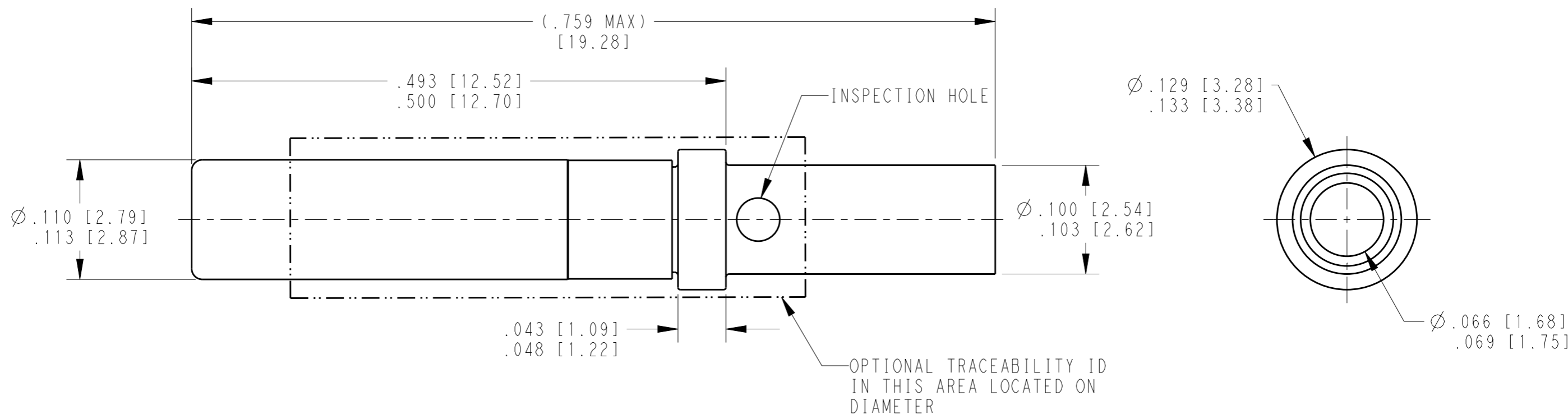
(CI) I. SEE APPLICATION SPECIFICATION 114-151004 FOR CRIMP TOOLS AND WIRE RANGE

NOTES:

THIS DRAWING IS A CONTROLLED DOCUMENT.		DWN D. MEYER 18DEC1997		
DIMENSIONS: INCHES [mm]		CHK VLADIMIR TOMSA 25MAY1999		
TOLERANCES UNLESS OTHERWISE SPECIFIED:		APVD R. REED 25MAY1999	NAME CONTACT PIN SIZE 16	
0 PLC ±		PRODUCT SPEC 108-151004	SIZE A3	
1 PLC ±		APPLICATION SPEC 114-151004	CAGE CODE 4AFU8	DRAWING NO 0460-202-16XX
2 PLC ±		MATERIAL	RESTRICTED TO	
3 PLC ±		FINISH	SCALE 10:1	
4 PLC ±		WEIGHT 0.55g	SHEET 1 OF 1	
ANGLES ±		CUSTOMER DRAWING	REV CI	

REVISIONS

P	LTR	DESCRIPTION	DATE	DWN	APVD
	NC	NEW RELEASE PER E.O. P15506	23DEC1997	DM	RDR
	A	RELEASED PER E.O. P15996	25MAY1999	DM	RDR
	B	RELEASED PER PCN E-18-001206	24JAN2018	JA	DM
	B1	REVISED PER PCN E-19-018080	21NOV2019	MK	DM



TE INTERNAL PN	DEUTSCH PN	PLATING
0462-201-1631	0462-201-1631	GOLD
0462-201-16141	0462-201-16141	NICKEL

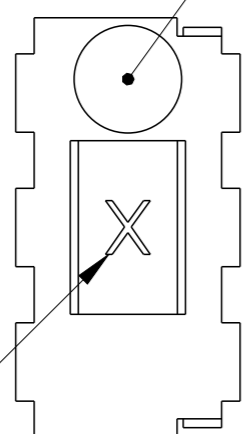
THIS DRAWING IS A CONTROLLED DOCUMENT.		DWN D. MEYER 17DEC1997	STE TE Connectivity	
DIMENSIONS: INCHES [mm]		CHK V. TOMSA 25MAY1999		
TOLERANCES UNLESS OTHERWISE SPECIFIED:		APVD R. REED 25MAY1999	NAME CONTACT SOCKET SIZE 16	
0 PLC ±		PRODUCT SPEC 108-151004	SIZE A3	
1 PLC ±		APPLICATION SPEC 114-151004	CAGE CODE 4AFU8	DRAWING NO 0462-201-16XX
2 PLC ±		WEIGHT 0.60g	RESTRICTED TO -	
3 PLC ±		CUSTOMER DRAWING	SCALE 10:1	SHEET 1 OF 1
4 PLC ±			REV B1	
ANGLES ±				
FINISH				

NOTES:
1. SEE APPLICATION SPECIFICATION 114-151004 FOR CRIMP TOOLS AND WIRE RANGE.

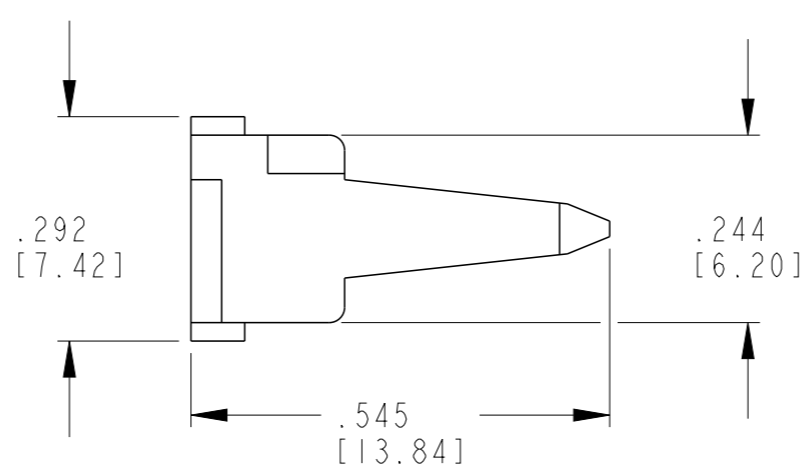
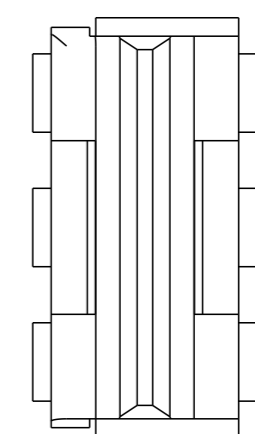
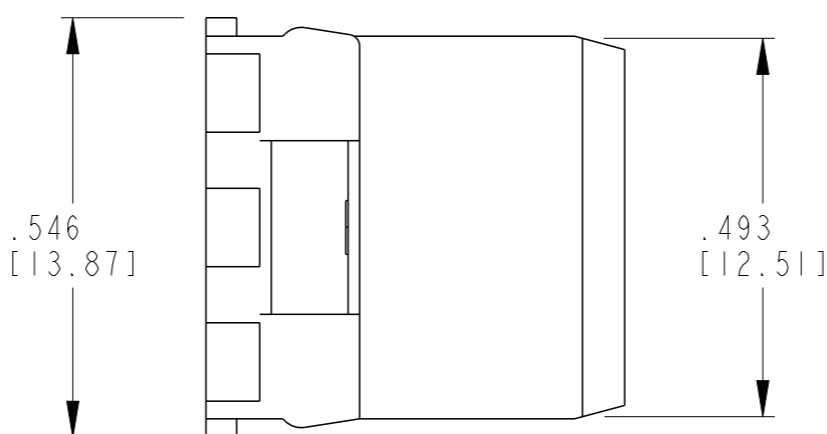
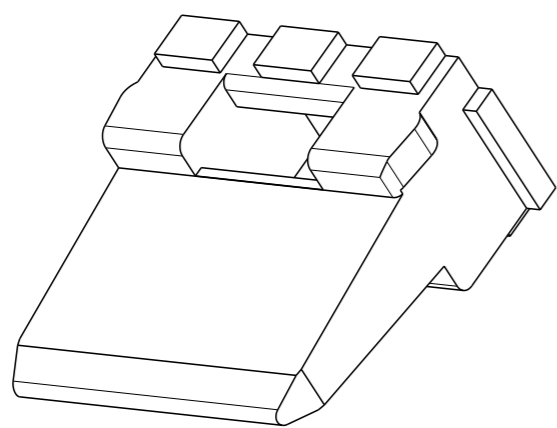
THIS DRAWING IS UNPUBLISHED. RELEASED FOR PUBLICATION 2013
 © COPYRIGHT 2013 TE CONNECTIVITY ALL RIGHTS RESERVED.

LOC	DIST	REVISIONS					
		P	LTR	DESCRIPTION	DATE	DWN	APVD
-	-		C1	REVISED PER ECO-14-005288	4-9-14	PV	DM
			G	REVISED PER PCN-23-190134	29SEP2023	GB	CB
			G1	REVISED PER PCN-25-261461	05NOV2025	AJ	MB
			G2	REVISED PER PCN-26-276654	14APR2026	CO	EC


OPTIONAL GATE VESTIGE APPROX. AS SHOWN



CAVITY I.D. APPROX. AS SHOWN.

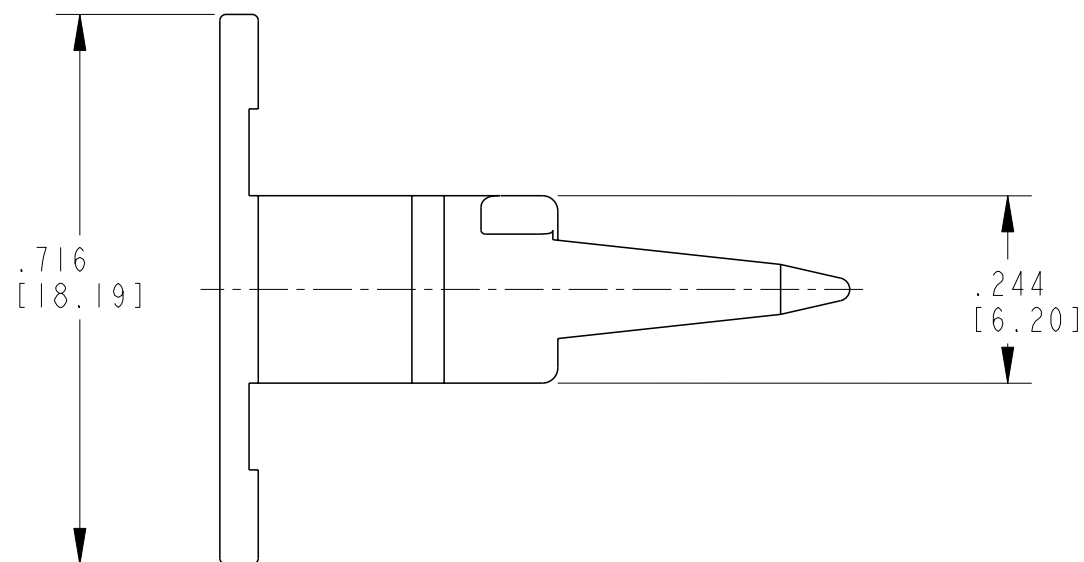
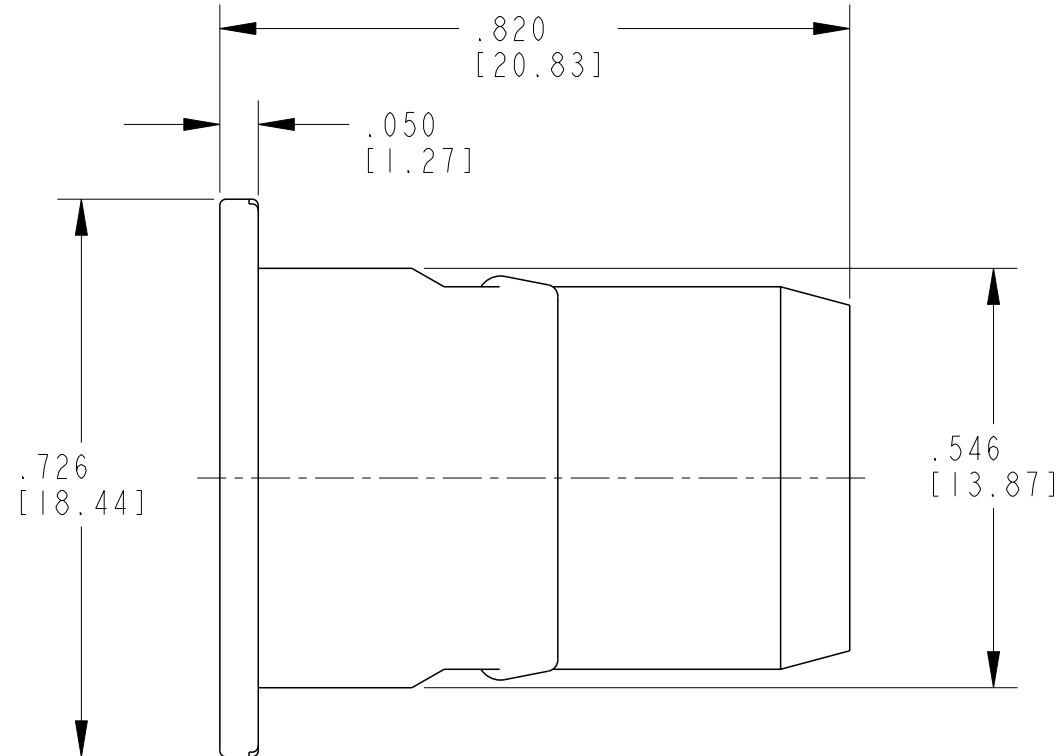
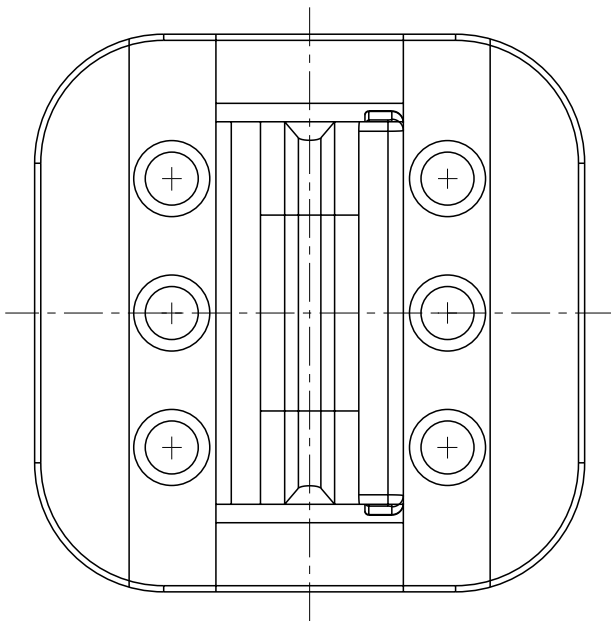


1. USED WITH DT04-6P-XXXX (XXXX = ALL MODIFICATIONS). CONSULT FACTORY FOR MODIFICATIONS AND APPLICATION.

THIS DRAWING IS A CONTROLLED DOCUMENT.		DWN 16AUG2013 R. MESSENGER	 TE Connectivity			
DIMENSIONS: INCHES [mm]		CHK 28MAR2014 R. MESSENGER				
TOLERANCES UNLESS OTHERWISE SPECIFIED:		APVD 28MAR2014 D. MEYER	NAME WEDGELOCK 6 WAY RECEPTACLE DT SERIES			
0 PLC ±- 1 PLC ±- 2 PLC ±- 3 PLC ±0.025 [0.64] 4 PLC ±- ANGLES ±0°30'0"		PRODUCT SPEC 108-151009	SIZE A3	CAGE CODE 4AFU8	DRAWING NO C=W6P	RESTRICTED TO -
MATERIAL PBT GF30 GREEN		FINISH -	APPLICATION SPEC 114-151009	WEIGHT 0.84 g	SCALE 3:1 SHEET 1 OF 1 REV G2	
CUSTOMER DRAWING						

REVISIONS

P	LTR	DESCRIPTION	DATE	DWN	APVD
	E	REVISED PER PCN-23-190134	29SEP2023	GB	CB



THIS DRAWING IS A CONTROLLED DOCUMENT.		DWN X. SANCHEZ	07NOV2001		
DIMENSIONS: INCHES [mm]		CHK -	APVD -		
		TOLERANCES UNLESS OTHERWISE SPECIFIED:		NAME WEDGE FOR 6 WAY PLUG COLOR : ORANGE DT SERIES ENVELOPE	
MATERIAL PBT GF30 ORANGE		FINISH -		PRODUCT SPEC 108-151009	RESTRICTED TO -
0 PLC ± 1 PLC ± 2 PLC ± 3 PLC ±.025 4 PLC ± ANGLES ±		APPLICATION SPEC 114-151009		SIZE A3	CAGE CODE 00779
		WEIGHT -		DRAWING NO G-W6S	
1. CONSULT FACTORY FOR APPLICATION.			CUSTOMER DRAWING; RESTRICTED CUSTOMER		SCALE 4:1
2. USED WITH DT06-6S-XXXX (XXXX = ALL MODIFICATIONS). CONSULT FACTORY FOR MODIFICATIONS AND APPLICATION.			SHEET 1 OF 1		REV E

1. CONSULT FACTORY FOR APPLICATION.

2. USED WITH DT06-6S-XXXX (XXXX = ALL MODIFICATIONS).
CONSULT FACTORY FOR MODIFICATIONS AND APPLICATION.

Printed on 24 Oct 2023 09:51 (Eastern Standard Time) from TE354946